



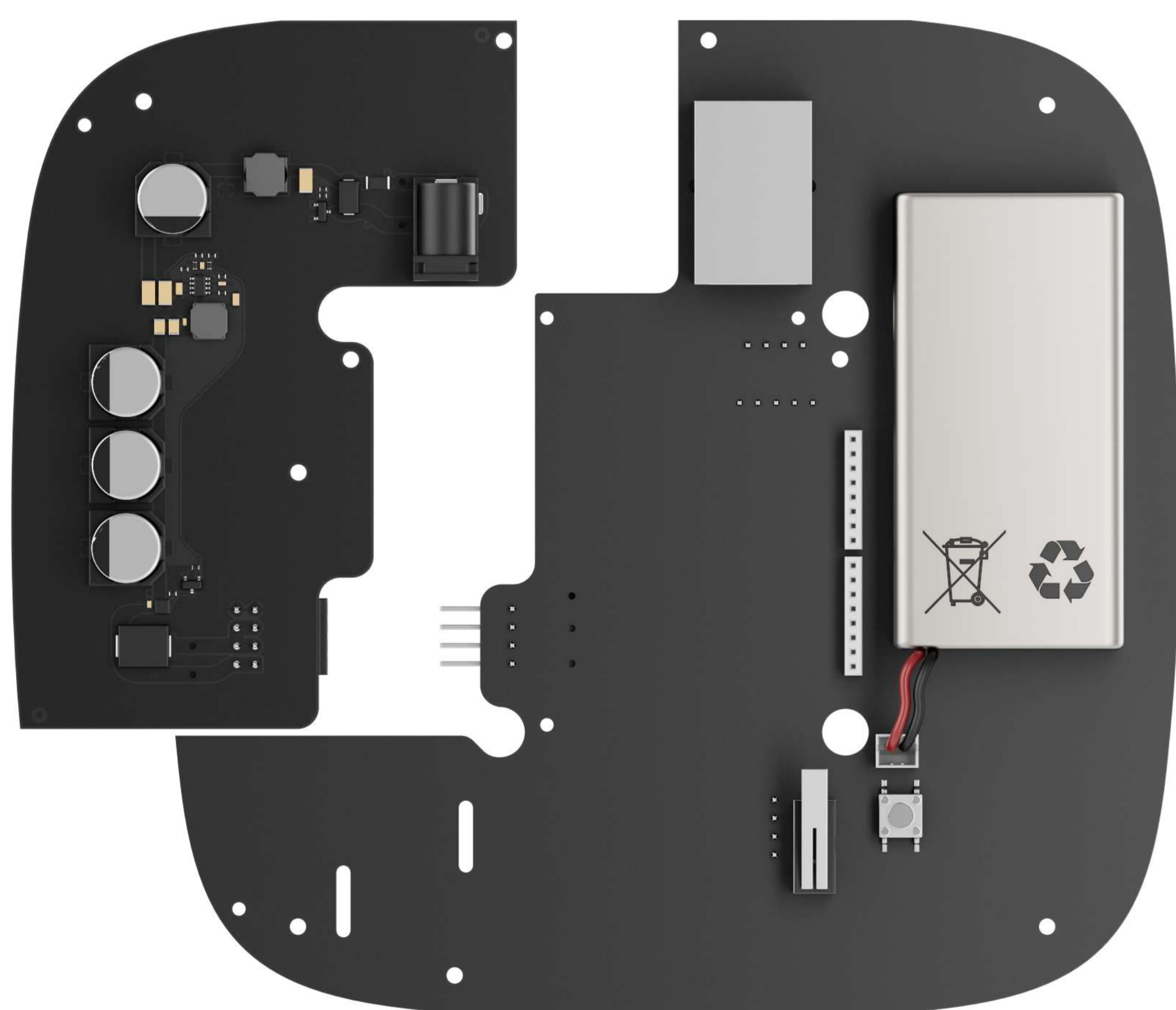
# 12–24V PSU for Hub 2/ Hub 2 Plus/ReX 2

An alternative power supply unit connecting Ajax control panels and range extenders to low-voltage sources. Replaces the built-in 110/230 V~ power supply unit.



Find the detailed information on the device at the link:

 [ajax.systems/support/devices/12-24-vpsu-hub2/](https://ajax.systems/support/devices/12-24-vpsu-hub2/)



## Installation

It will take about 10 minutes for a professional electrician to install an alternative power supply unit into a control panel or range extender.

12–24V PSU features a standard socket connecting the power jack plug and a terminal adapter in the set. The process requires one PH1 screwdriver and the installation manual at the link: [ajax.systems/support/devices/12-24V-PSU-hub-2](https://ajax.systems/support/devices/12-24V-PSU-hub-2)

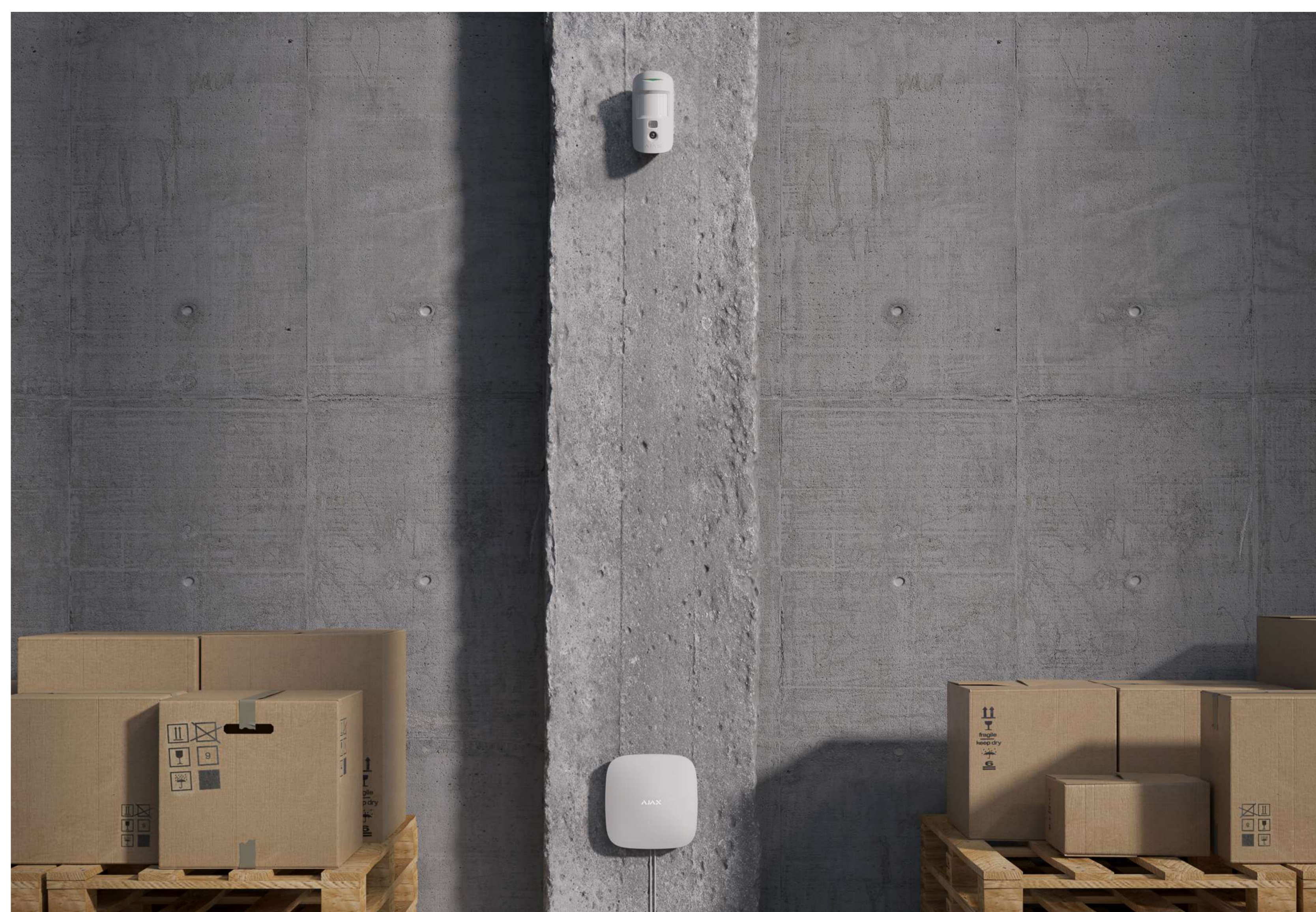


Alternative power supply units are also available for Hub, Hub Plus, and ReX. Detailed information is available at the link: <https://ajax.systems/products/12vpsu/>

# How to use

## At a warehouse

Use the Ajax security system with visual alarm verification in premises lacking electricity or having an unstable power supply. A 12–24 V $\overline{=}$  power supply unit allows connecting hubs and radio signal extenders to low-voltage networks or using a portable battery.



## In a trailer or a truck

Connect the hub to a car or portable battery, and the security system will travel with the driver to protect property or cargo.

## On a yacht

Insert a SIM card and connect the hub to the on-board network or battery so that Ajax guards the boat at the pier.



# Technical specifications

<p>Compatibility</p> <p><b>Hubs</b> Hub 2 Hub 2 Plus</p> <p><b>Range extenders</b> ReX 2</p>	<p>Connection to mains</p> <p><b>Socket</b> 6.5 × 2 mm</p> <p><b>Plug</b> 5.5 × 2.1 mm Power jack</p>
<p>Input</p> <p><b>Voltage</b> 8–32 V<math>\overline{=}</math></p> <p><b>Current</b> up to 1 A</p> <p><b>Switch-on voltage</b> 8 V<math>\overline{=}</math> ± 2.5%</p> <p><b>Switch-off voltage</b> 7–7.5 V<math>\overline{=}</math> Depending on the load</p>	<p>Output</p> <p><b>Voltage</b> 4.65 V<math>\overline{=}</math> ± 5%</p> <p><b>Current</b> up to 1.5 A</p>
<p>Installation</p> <p><b>Installation method</b> inside the hub or range extender body</p> <p><b>Operating temperature range</b> from –10°C to +40°C</p> <p><b>Operating humidity</b> up to 75%</p>	<p>Body</p> <p><b>Colour</b> N/A</p> <p><b>Dimensions</b> 98 × 70 × 17 mm</p> <p><b>Weight</b> 26 g</p>
<p>Complete set</p> <p>12–24V PSU for Hub 2/ Hub 2 Plus/ReX 2 Terminal adapter Quick Start Guide</p>	